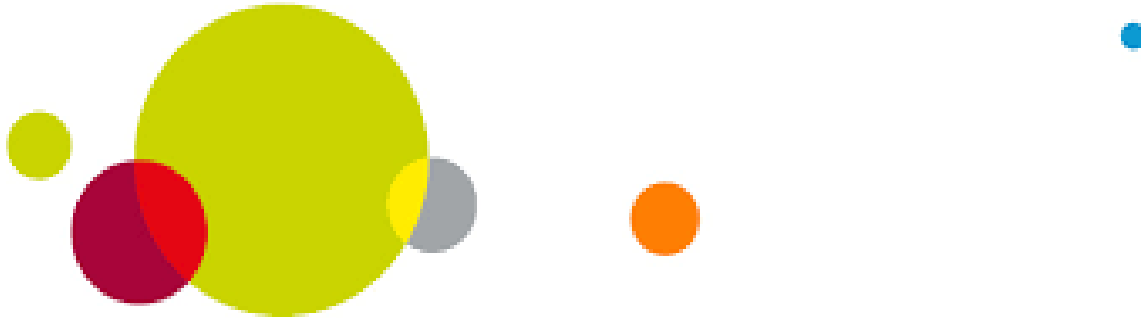
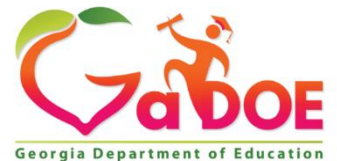


2019 EOPA OVERVIEW



Irish Saxton
404-657-0536
isaxton@doe.k12.ga.us



Richard Woods, Georgia's School Superintendent
"Educating Georgia's Future"

Today's Topics

- EOPA Overview (Students reported in the EOPA data collection)
- EOPA Application Overview
- EOPA Reports (How can you verify data)?
- EOPA Eligibility Report
- Reminders
- EOPA Documentation

Overview of EOPA Application

The End of Pathway Assessment (EOPA) Test Takers application is pre-populated from Student Class with students identified as pathway completers during the current school year.

These students must be reported in the current year Student Class collection and must report a completed CTAE Pathway course with credit this school year.

Which Students Appear in the EOPA Application

Current Year Student Class

Student must be reported in current year Student Class in grades 9 -12

Other CTAE courses for pathway in course history

The student has two courses completed for the pathway with two units of credit earned between 2014 and the prior year Student Class collection.

Student Earned Credit for CTAE course in current school year

One course record must be reported in the current year Student Class collection for a student where credit is earned for a CTAE course tied the same pathway.

EOPA MAIN MENU




EOPA Main Menu (Prior to Student Class Sign Off)

[Go To Main Menu](#)

EOPA Main Menu

No Data Submitted

No EOPA Eligibility Records.

-  [Pathway Completers Skills Assessment Test Takers](#)
-  [Pathway Completers District Summary and Signoff Report](#)
-  [EOPA Eligibility Report](#)

Current Documentation

- [EOPA File Layout](#)

EOPA APPLICATION



EOPA Main Menu (After Student Class Sign Off)

[Go To Main Menu](#)

EOPA Main Menu

No Data Submitted

-  [Pathway Completers Online Entry](#)
-  [Add Students Online](#)
-  [Upload Records](#)
-  [Delete Records](#)
-  [Delete Invalid Records](#)

-  [Pathway Completers Skills Assessment Test Takers](#)
-  [Pathway Completers District Summary and Signoff Report](#)
-  [EOPA Eligibility Report](#)

Current Documentation

- [EOPA File Layout](#)

EOPA Application

When the EOPA application becomes available after Student Class sign off, each district will flag students that took a pathway assessment and indicate whether the student passed the assessment. EOPA records may be updated using one or more of the following options.

Three options for updating EOPA records:

- 1. Pathway Completers Online Entry** – Use this option to access the pre-populated list of pathway completers (eligible test takers) . From this list, you can indicate whether the student took the End of Pathway Assessment and whether the student passed the assessment.
- 2. Add Students Online** – Use this option to add students that successfully completed a pathway during the FY2019 school year and are not already in the pre-populated list.
- 3. Upload Records** – Allows districts to upload student data directly into the EOPA application. Use the EOPA File Layout located on the EOPA Main Menu – under ‘Current Documentation’.

EOPA APPLICATION – ONLINE ENTRY

PATHWAY COMPLETERS ONLINE ENTRY

Georgia Department of Education
End of Pathway Assessment (EOPA 2014)

End of Pathway Assessments Application
999- Sample County

[Go To Main Menu](#)

Pathway Completers Online Entry

School:

Pathway:

Assessment:

GTID	Last Name	First Name	Grade Level	Did Student Take EOPA Assessment?	Did Student Pass EOPA Assessment?
xxxxxx8910	Example	Lxxx	12	<input checked="" type="radio"/> Yes <input type="radio"/> No	<input checked="" type="radio"/> Yes <input type="radio"/> No
xxxxxx7891	Doe	Gxxxx	12	<input type="radio"/> Yes <input checked="" type="radio"/> No	<input type="radio"/> Yes <input type="radio"/> No

EOPA APPLICATION – ADD STUDENTS ONLINE

Adding Students Online in EOPA

[Go To Main Menu](#)

Add Students Online

School:

Pathway:

Assessment:

GTID Student Id	Last Name	First Name	Grade Level		GTID Student Id	Last Name	First Name	Grade Level
				=> <=>				

A list of students that were not on the pre-populated list will appear here.

The district will be able to select the student(s) from the list on the left

EOPA APPLICATION – UPLOADING RECORDS

UPLOAD RECORDS

Districts choosing to upload a file may do so by selecting the **Upload Records** link from the EOPA main menu. The screen shown below will appear, which will allow the user to browse and attach a file for upload. The EOPA File Layout must be used for generating the text file to upload. The EOPA File Layout is located on the portal on the EOPA Main Menu – under ‘Current Documentation’.

Georgia Department of Education
End of Pathway Assessment (EOPA 2017)

EOPA File Upload
601-Applying County

Send this file:

[Back to Menu](#)

EOPA APPLICATION – UPLOADING RECORDS

Things to remember when uploading an EOPA extract file:

1. The upload file should include students who have taken an assessment this school year while enrolled at that school.
2. The **GTID** reported for a student must match the **GTID** reported in Student Class.
3. The Assessment Code must match a valid assessment code listed on the CTAE End of Pathway Assessment Codes (EOPA) spreadsheet.
4. The **FISCAL YEAR**, **SYSTEM CODE**, and **SCHOOL CODE** must be valid codes and must match the codes reported in Student Class.

EOPA APPLICATION – UPLOADING RECORDS

Things to remember when uploading (continued):

5. Errors must be corrected at the source (typically in the SIS) and a new extract file will need to be uploaded. There is no option for online error correction.
6. Ensure that all EOPA test takers have been properly flagged and are free of errors.
7. The reports include error-free records only. This means that the District Summary and Sign Off Report will not include any students with errors on the EOPA error report.
8. Each district must *verify* that **no errors remain on the error report before the Superintendent signs off** on the district summary report.

EOPA APPLICATION - REPORTS

Two EOPA reports are available to assist the district in verifying the data reported:

- ✓ **Pathway Completers Skills Assessment Test Takers**
- ✓ **Pathway Completers District Summary and Signoff Report**

1. ***Pathway Completers Skills Assessment Test Takers***

This report is an *electronic version of the spreadsheet* previously used by CTAE coordinators to report the EOPA Test Takers data. It includes a count of students by school, pathway and assessment. There are links which allow the user to drill down and see the total students tested. This report can also be downloaded to Excel.

EOPA APPLICATION - REPORTS

Pathway Completers Skills Assessment Test Takers

School Id - Name	Pathway	Assessment	Total Students Tested	Total Students Passed	American Indian		Asian		Black		Hispanic		Pacific Islander		Two or More Race		White		SWD		Single Parent		EL		Migrant		
					Passed	Failed	Passed	Failed	Passed	Failed	Passed	Failed	Passed	Failed	Passed	Failed	Passed	Failed	Passed	Failed	Passed	Failed	Passed	Failed	Passed	Failed	Passed
Sample County High School - 0103	Male	Agriculture Leadership in Forestry - Agriculture, Food and Natural Resources	0	0	0	0	0	0	0	0	0	0	0	0	0	0	0	0	0	0	0	0	0	0	0	0	0
	Female	Agriculture Leadership in Forestry - Agriculture, Food and Natural Resources	1	0	0	0	0	1	0	0	0	0	0	0	0	0	0	0	0	0	0	0	0	1	0	0	
	Total Students	Agriculture Leadership in Forestry - Agriculture, Food and Natural Resources	<u>1</u>	0	0	0	0	1	0	0	0	0	0	0	0	0	0	0	0	0	0	0	0	1	0	0	

The report shows counts by gender, race, Hispanic, SWD, Single Parent, EL, and Migrant status.

EOPA APPLICATION - REPORTS

2. *Pathway Completers District Summary and Signoff Report*

This report provides a school and pathway summary of students that took an assessment and those that passed the assessment. There are links which allow the user to drill down and see the students in each column.

School Id	School Name	Pathway Completed	Number of Students Taking an EOPA Assessment	Number of Students Passing EOPA Assessment
0100	Cross Creek High School	Nutrition and Food Science - Human Services	28	23
0100	Cross Creek High School	Personal Care Services - Cosmetology - Human Services	28	15
0100	Cross Creek High School	Fashion, Merchandising and Retail Management - Marketing	7	6
0100	Cross Creek High School	Web & Digital Design - Information Technology	18	1
0100	Cross Creek High School	Sports and Entertainment Marketing - Hospitality & Tourism	32	8
0100	Cross Creek High School	Plant and Landscape Systems - Agriculture, Food and Natural Resources	26	15
0100	Cross Creek High School	Automobile Service Technology - Transportation, Distribution and Logistics	14	9
Total			153	77
0213	Richmond County Technical Career Magnet School	Networking - Information Technology	10	1
0213	Richmond County Technical Career Magnet School	Culinary Arts - Hospitality & Tourism	9	7
0213	Richmond County Technical Career Magnet School	Cybersecurity - Information Technology	9	0
0213	Richmond County Technical Career Magnet School	Web & Digital Design - Information Technology	1	1
0213	Richmond County Technical Career Magnet School	Energy and Power: Generation, Transmission, and Distribution - Energy	1	1
0213	Richmond County Technical Career Magnet School	Audio Video Technology & Film II - Arts, A/V Technology & Communications	11	8
0213	Richmond County Technical Career Magnet School	Engineering and Technology - Science, Technology, Engineering & Mathematics (STEM)	4	2
Total			45	20
System Totals			198	97

As Superintendent of the **Sample** County School District, I certify that the school district's data for End of Pathway (EOPA) Test Takers has been updated and verified by employees who are ultimately under my supervision and control; who have been trained in the importance of accurate data collection and reporting; and who have represented that the data is complete and accurate. I further certify that I have not by any means directly or indirectly falsified or intentionally misrepresented any aspect of this report nor do I know of anyone who has.

I acknowledge that this information may be used for state and federal reporting, and therefore may be submitted to Federal, state and other governmental agencies and to the legislature and other policy makers. I understand that this information is subject to being audited at any time by the Georgia Department of Education, the Georgia Department of Audits and Accounts, the Governor's Office of Student Achievement, the office of Inspector General, and the United States Department of Education. I further acknowledge that knowingly falsifying, misrepresenting or omitting any of this information may result in criminal, civil, or administrative penalties, including disciplinary action under the Code of Ethics for Educators.

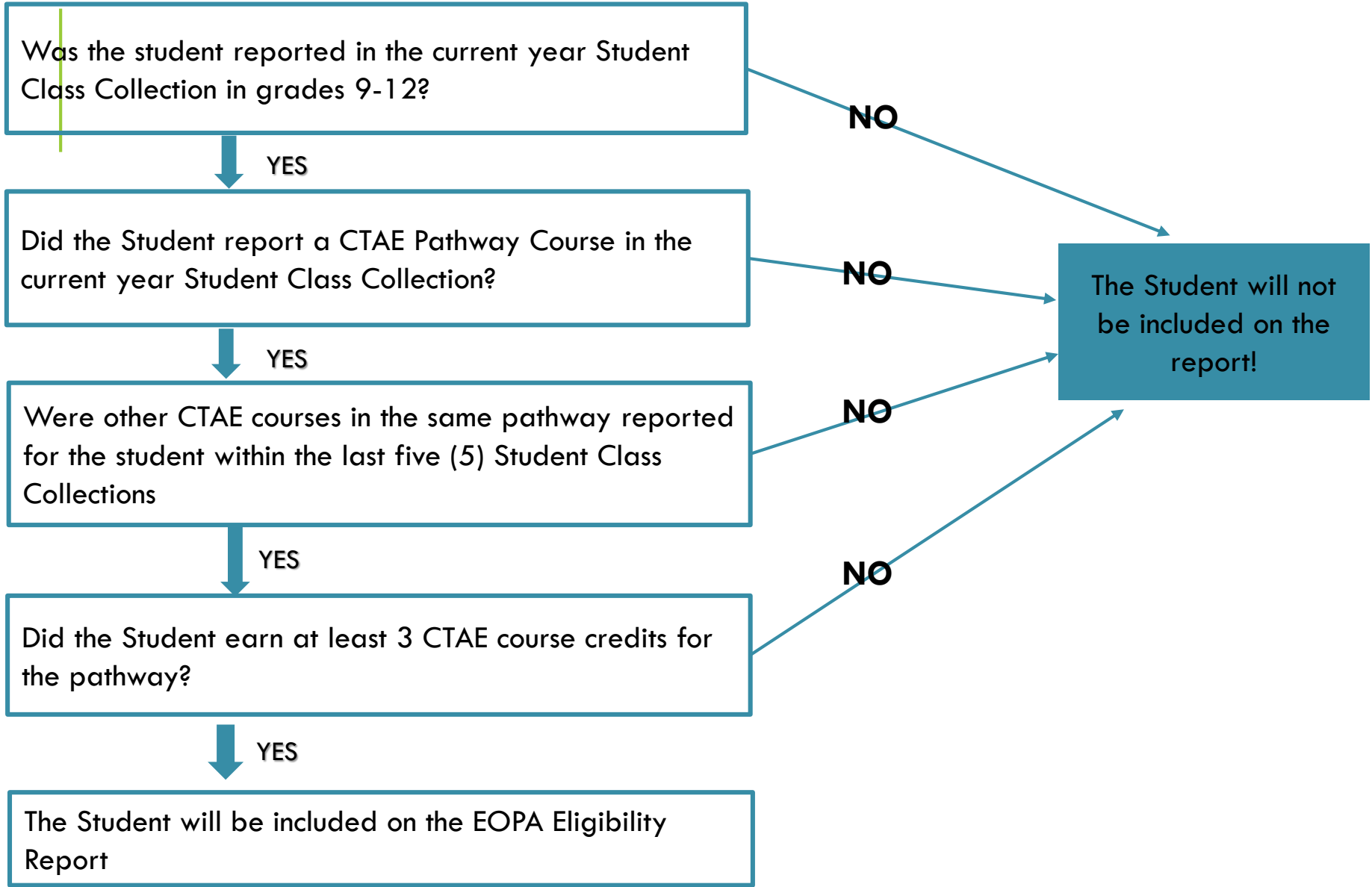
STUDENTS INCLUDED ON THE EOPA ELIGIBILITY REPORT

EOPA Eligibility Report

The 'EOPA Eligibility Report' will show students reported in the current year Student Class collection who are in grades 9-12 that are either 'In Progress' or 'Eligible' to take the EOPA assessment. To show on the report, the student must report a CTAE pathway course in the current year Student Class collection; the remaining courses must be in the student's course history.

- IN PROGRESS** - Student has successfully completed TWO (2) CTAE courses for a pathway and earned a unit of credit for each course (Total of 2 units), and is currently taking 3rd CTAE course for the pathway.
- ELIGIBLE** - Student has successfully completed THREE (3) CTAE courses in a pathway and earned a unit of credit for each course (Total of 3 units).

WHICH STUDENTS APPEAR ON THE EOPA ELIGIBILITY REPORT?



EOPA Eligibility Report

Please Note:

- Only students on the EOPA Eligibility Report will be included on the pre-populated pathway lists (Pathway Completers Online Entry) in the EOPA application. The student's Eligibility Status on the report will be 'In Progress' or 'Eligible'.



Q&A

Q. I have a student that completed the first course of a pathway last year. This year he is taking the other 2 courses in the pathway. Why isn't he on the EOPA Eligibility Report?

A. Only students that have completed 2 courses and are currently enrolled in the third course of a pathway appear on the EOPA Eligibility Report

ACCESSING THE EOPA ELIGIBILITY REPORT IN STUDENT CLASS

[Go To Main Menu](#) **Student Class Main Menu**

No data has been transmitted yet.


- [File Upload](#)
- [Validate Data](#)
- [Add/Edit/Delete Student Information](#)

- [Error Report](#)
- [Student Course Profile Reports](#)
- [Student Class Reports](#)
- [Student Schedule Report](#)
- [Course Grade Reports](#)
- [Sign-Off Report](#)
- [ADHOC Query](#)
- [EOPA Eligibility Report](#)**

- [Data Deletion](#)
- [Delete All System Data](#)

- [Manual Relief Request](#)
- [SC Primary Contacts](#)

- [SC Transmission List](#)
- [SC Transmission Status](#)



EXAMPLE OF THE EOPA ELIGIBILITY REPORT

EOPA Eligibility Report - Summary Level (sample only)

School Id	School Name	Pathway Completed	Number of Students Eligible
0103	Sample County High School	Culinary Arts - Hospitality	<u>5</u>
0103	Sample County High School	Graphic Design - Arts, A/V Technology	<u>5</u>
0103	Sample County High School	Graphic Communications - Arts, A/V Technology	<u>6</u>
0103	Sample County High School	Welding (Metals) - Architecture and Construction	<u>2</u>
0103	Sample County High School	Electronics - Science, Technology, Engineering (STEM)	<u>7</u>
0103	Sample County High School	Forest/ Wildlife Management - Agriculture, Food and Natural Resources	<u>3</u>
Total			<u>28</u>
System Totals			<u>28</u>

EXAMPLE OF THE EOPA ELIGIBILITY REPORT (PATHWAY DETAIL)

Detail by Pathway within a School (sample only)

School		Pathway	Course Number	GTID	Last Name	First Name	Grade Level	Race/ Ethnicity	Gender	Credit Hours Earned	Eligible For Assessment
ID	Name										
0103	Sample County High School	Culinary Arts - Hospitality	20.5310014 20.5321014 20.5331014	xxxxxx5039	Test	Cxxxx	11	B	F	3000	ELIGIBLE
0103	Sample County High School	Culinary Arts - Hospitality	20.5310019 20.5331014	xxxxxx2561	Hands	Jxxxx	12	B	F	2000	IN PROGRESS
0103	Sample County High School	Culinary Arts - Hospitality	20.5310018 20.5310019 20.5321014	xxxxxx1588	Herring	Bxxxxx	11	W	M	3000	ELIGIBLE
0103	Sample County High School	Culinary Arts - Hospitality	20.5310018 20.5310019 20.3210140	xxxxxx8964	Jaram	Jxxx	11	H	M	3000	ELIGIBLE
0103	Sample County High School	Culinary Arts - Hospitality	20.5310014 20.5321014 20.5331014	xxxxxx3944	Last	Jxxx	11	W	F	3000	ELIGIBLE

Reasons Why a Student May Not Appear on the EOPA eligibility Report

➤ Reasons why a student may not be on the report:

1. The student did not complete a pathway in 2019.
2. The student does not have a total of 3 units of credit for the courses taken in the pathway.
3. All of the student's course data was not reported over the past 5 years to present Student Class cycles.
4. The student has historical course data from periods outside the Student Class cycle.
5. Student completed a pathway this year, but there is no assessment tied to that pathway.

EOPA Eligibility Report - Reminders

❖ Remember:

1. Student Class collects data related to the current school year.
2. The EOPA course data is matched based on the GTID.
3. The EOPA Eligibility Report is located on the *Student Class Menu* in Student Class *AND* the EOPA Main Menu.
4. The report may be used to verify students that completed a pathway this school year.
5. The report will enable districts to determine, in advance, which students will be pre-populated in the EOPA application.
6. Students that are not included on the report may be addressed directly in the EOPA application once the district has signed off on Student Class and has access to the EOPA application.

EOPA Reminders

❖ Reminders for FY2019 EOPA:

- The EOPA Eligibility Report will be available in Student Class beginning the middle of April.
- The district Superintendent must sign off on Student Class before the EOPA application is available for the district.
- **EOPA Superintendent sign off is required for all districts** - even if no students were reported as completing a pathway.

EOPA DOCUMENTATION

□ FY2019 EOPA Documentation

FY2019 EOPA documentation is available on the Data Collections website:

- FY2019 EOPA Application Overview (Transmission instructions)
- FY2019 CTAE EOPA Assessment Codes
- FY2019 EOPA Pathway Codes

[http://www.gadoe.org/Technology-Services/Data-Collections/Pages/End-of-Pathway-Assessment-\(EOPA\).aspx](http://www.gadoe.org/Technology-Services/Data-Collections/Pages/End-of-Pathway-Assessment-(EOPA).aspx)

□ The FY2019 EOPA File Layout is available on the EOPA Main Menu.

□ The 2019 EOPA Webinar will be posted on the Data Collections Web page

□ <http://www.gadoe.org/Technology-Services/Data-Collections/Pages/FY2019-Presentations%2c-Webinars%2c-and-Miscellaneous-Documentation.aspx>

EOPA ASSISTANCE



For Questions related to the MYGADOE PORTAL and the EOPA Application (Errors, Uploading, Reports, etc.), please EMAIL the HELPDESK at dticket@doe.k12.ga.us.

For EOPA PROGRAM questions, please contact:
Mamie Hanson (Program Specialist)
Phone 404 657-6279
Email: mhanson@doe.k12.ga.us