

# EOPA LIVE DEMO

May 2, 2019

Irish Saxton

Data Collection Specialist

Georgia Department of Education

Phone: 404-657-0536

[isaxton@doe.k12.ga.us](mailto:isaxton@doe.k12.ga.us)

# Today's Topics

## EOPA Application Overview

### LIVE DEMO

- Accessing the EOPA Application
- Using the EOPA Application
  - 1.Pathway Completers 'Online Entry'
  - 2.Add Students Online
  - 3.Upload Records
- Reports
  - Pathway Completers Skills Assessment Test Takers
  - Pathway Completers District Summary and Signoff Report
  - EOPA Eligibility Report
- Student Pathway Course History

## Overview of EOPA Application

The End of Pathway Assessment (EOPA) Test Takers application is prepopulated from Student Class with students identified as pathway completers during the current school year.

These students must be reported in the current year Student Class collection and must report a completed CTAE Pathway course with credit this school year.

# Which Students Appear in the EOPA Application

**Current Year Student Class**

Student must be reported in current year Student Class in grades 9 -12

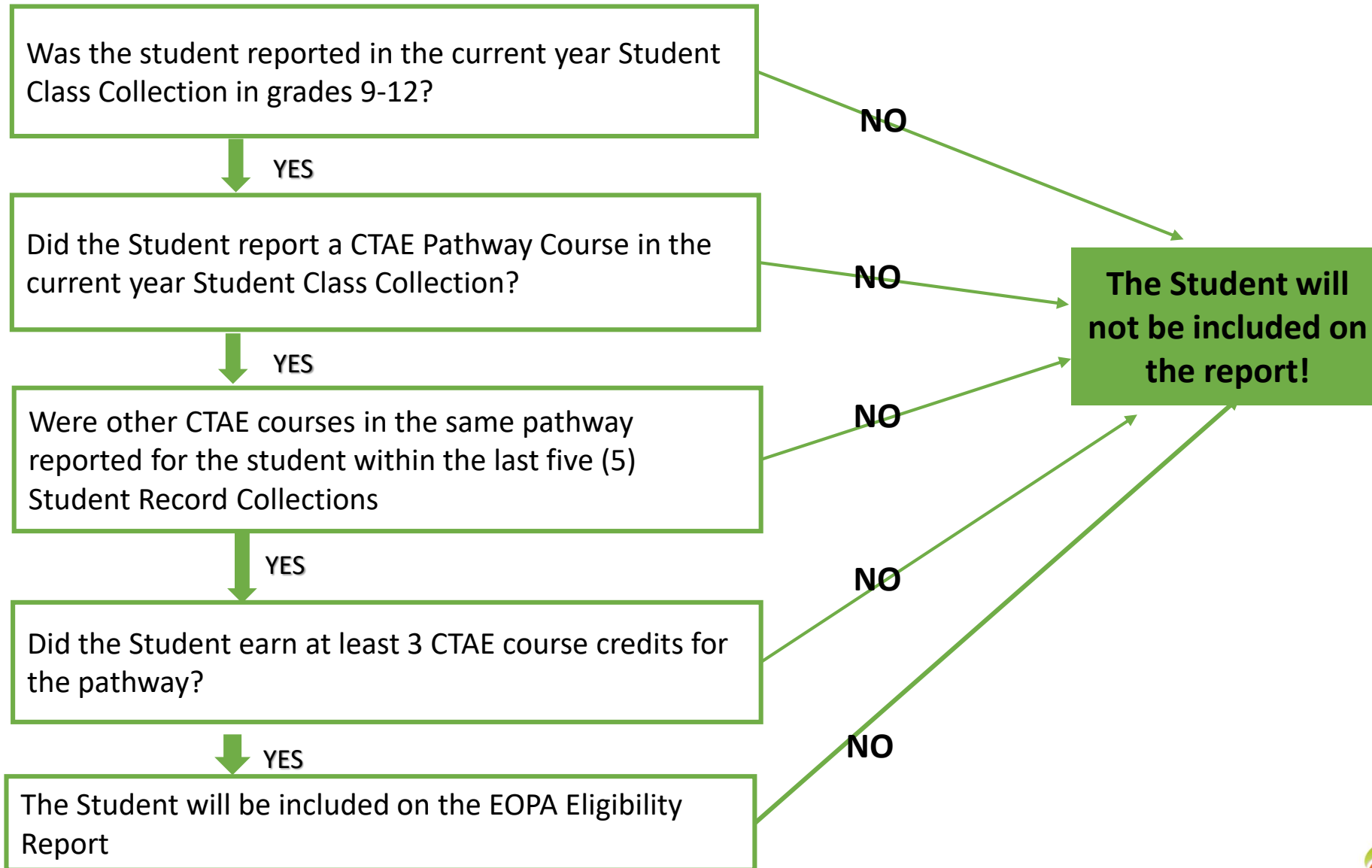
**Other CTAE courses for pathway in course history**

The student has two courses completed for the pathway with two units of credit earned between 2015 and the prior year Student Class collection.

**Student Earned Credit for CTAE course in current school year**

One course record must be reported in the current year Student Class collection for a student where credit is earned for a CTAE course tied to the same pathway.

# Which Students Appear on the EOPA Eligibility Report







# This is the view of the EOPA Menu prior to signing off Student Class

[Go To Main Menu](#)

## EOPA Main Menu

No Data Submitted

-  [Pathway Completers Skills Assessment Test Takers](#)
-  [Pathway Completers District Summary and Signoff Report](#)
-  [EOPA Eligibility Report](#)
-  [Student Pathway Course History](#)

### Current Documentation

- [EOPA File Layout](#)

# This is the view of the EOPA Main Menu after Student Class signoff

[Go To Main Menu](#)

## EOPA Main Menu

**Data have errors.**

- [Pathway Completers Online Entry](#)
- [Add Students Online](#)
- [Upload Records](#)
- [Delete Records](#)
- [Delete Invalid Records](#)
- [Error Report](#)
- [Pathway Completers Skills Assessment Test Takers](#)
- [Pathway Completers District Summary and Signoff Report](#)
- [EOPA Eligibility Report](#)
- [Student Pathway Course History](#)

**Current Documentation**

- [EOPA File Layout](#)

# EOPA Application Overview

## EOPA Application Live Demo



# EOPA Assistance



For Questions related to the MYGADOE PORTAL and the EOPA Application (Errors, Uploading, Reports, etc.), please EMAIL the HELPDESK at [dticket@doe.k12.ga.us](mailto:dticket@doe.k12.ga.us).

For EOPA PROGRAM questions, please contact:  
Mamie Hanson (Program Specialist)  
Phone 404 657-6279  
Email: [mhanson@doe.k12.ga.us](mailto:mhanson@doe.k12.ga.us)